

Magnum Pro

CALBRATION PUMPS



MP-P | MP-V

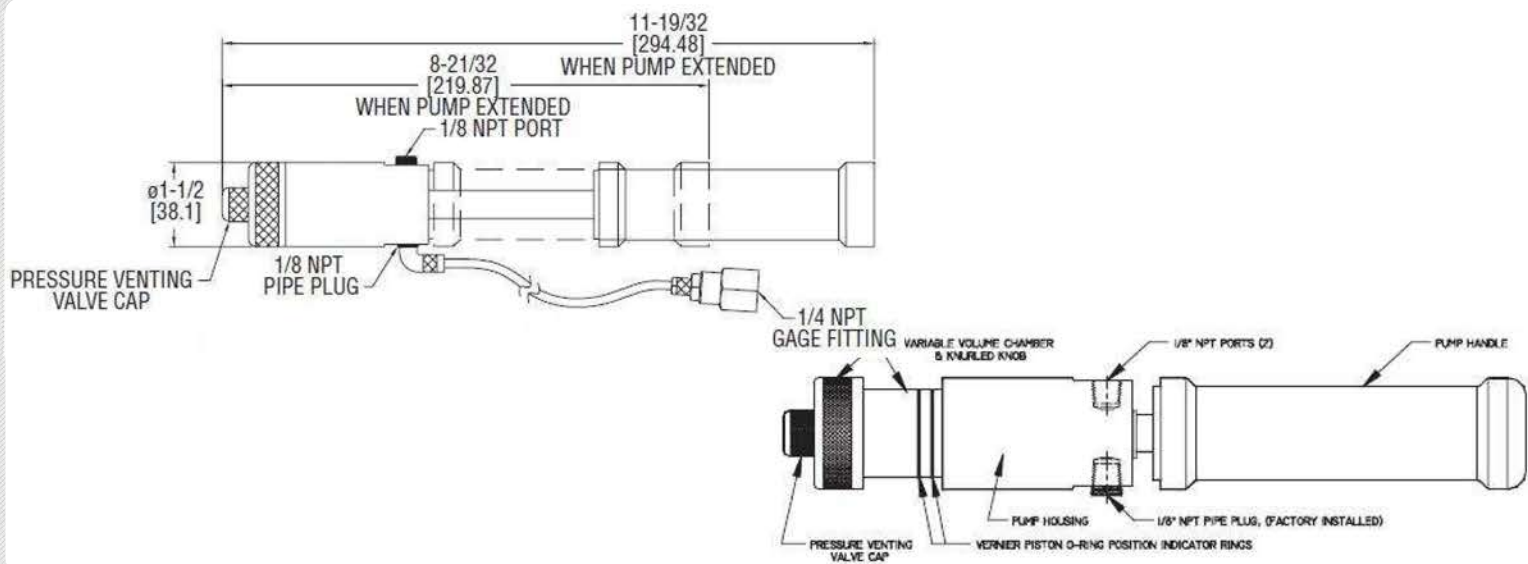
Low Pressure | Vacuum Hand Pumps

Features a Delrin® plastic handle that prevents body heat transfer from interfering with readings, as well as an oversized check valve for smooth operation. The dual o-rings on all pistons ensure zero leakage. It uses a “Schrader” valve which totally eliminates failure caused by the vent valve failing. The unique hose and fittings are push-on, and a swivel keeps the hose from tangling. If the hose is damaged simply cut off the end and reinsert it into the fitting. A special non-dispersing lubricant makes the first stroke as easy as the others, and eliminates wear caused by the grease migrating to the ends of the stroke. Construction is so strong that the Magnum pumps can be repeatedly dropped on a concrete floor without damage.

Prima Strada 10
20090 Segrate, Milano, Italy



Tel: +39 0270301338
Fax: +39 0270305311



MP-P Low Pressure Hand Pump | MP-V Vacuum Hand Pump

Specifications

Accuracy: 1%

Range: 0-28" Hg (MP-V) | 0-100 psi (MP-P)

Connections: Two 1/8" NPT female ports (gauge & Process) (one removable plug, hose and 1/4" NPT female included)

Materials: Delrin® plastic handle, nitrile o-rings.

Weight: 1.5 lbs (0.68 kg)

Warranty: 2-year "quibble free" warranty.

Compatible with all gauges and calibrators. Made in the USA.

Models

MP-P.....

MP-P + HK-1.....
adds a 2ft non-stretch hose kit w/ fittings for side port.

MP-PKT.....
includes Pump, a black padded canvas case embroidered with orange thread, 2ft non-stretch hose, fittings and Winchester Engineering M-2 stainless steel 2" analog gauge w/ protective rubber boot.

MP-PKT-FIT.....
includes everything in the MP-PKT plus FasTest universal quick connect kit and coupler for Swagelok tube fittings.

MP-PRK.....
Rebuild Kit for MP-P.

Features

- No-needle valves, "MASH-Proof" vent valve.
- Unique, easy-to-use hose and fittings. No snake to fight.
- Rugged Delrin and anodized aluminum construction.
- Dual O-rings on all pistons insure zero leakage, a solid feel, and very smooth operation.
- Compact (9"x 1-1/2") and lightweight.
- Oversized check valves for smooth controlled operation.
- Extra-large vernier adjustment range.
- Pressure venting can be done in increments of 0.1" H2O.

Operation

1. Prior to operation, turn the vernier to the middle position.
2. Connect the hose to the gauge or calibrator.
3. Pull the handle out and push back in to increase pressure or vacuum in the pump. Repeat as necessary to achieve desired pressure or vacuum.
4. Slight pressure adjustments can be made by holding the housing and turning the vernier knob.
5. To relieve pressure, turn the pressure relief valve cap clockwise. Do not over-tighten.

Points to Remember

- Insure that all gauges and instruments to be calibrated are disconnected from process pressures prior to connecting the pump. The maximum pump design pressure for both the MP-P and MP-V is 150 psig. Connection to a pressure source greater than 150 psig could cause serious injury to person or damage to the pump.
- The fittings and tubing on both the MP-P and MP-V are unique. To reattach tubing to any fitting, heat the tubing end with a heat gun or boiling water to soften the material. Then put the tubing onto the fitting with a twisting motion.
- For best results, operate either pump with the vernier turned to the middle position.

Maintenance

No routine maintenance is required. A periodic check of system calibration is recommended, however. While the MP-P and MP-V are field serviceable, it is recommended they be returned to East Hills Instruments Europe if repair is needed. Be sure to include a brief description of the problem plus any relevant application notes.